

European Retail Price List 2006 - € (Euros)

TURBO ACCESSORIES

For the modest turbo owner looking for the "unseen" advantage we now offer a range of products in the new **Sleeper Series - anodised black**



Blow-off Valves

Multi-Fit Series

Description

Part No.

Retail Price € (Euro) - exc VAT



Please Note: The Multi-Fit range is supplied with adapter FG-ADA-SS38 for welding to stainless or mild steel pipe work. If this does not suit your application please use one of our adapter kits.

Type 1 -Blow-off Valve	FG-BOV-001	124.57
Sleeper Series -Type 1 -Blow-off Valve	FG-BOV-001-S	124.57
Type 2 -Vee Port	FG-BOV-002VP	197.07
Sleeper Series -Type 2 -Vee Port	FG-BOV-002VP-S	197.07
Type 3 -Dual Port 25mm	FG-BOV-003DP25	282.75
Sleeper Series -Type 3 -Dual Port 25mm	FG-BOV-003DP25-S	282.75
Type 3 -Dual Port 29mm	FG-BOV-003DP29	282.75
Sleeper Series -Type 3 -Dual Port 29mm	FG-BOV-003DP29-S	282.75
Type 3 -Dual Port 32mm	FG-BOV-003DP32	282.75
Sleeper Series -Type 3 -Dual Port 32mm	FG-BOV-003DP32-S	282.75
Type 3 -Dual Port 34mm	FG-BOV-003DP34	282.75
Sleeper Series -Type 3 -Dual Port 34mm	FG-BOV-003DP34-S	282.75
Type 3 -Dual Port 38mm	FG-BOV-003DP38	282.75
Sleeper Series -Type 3 -Dual Port 38mm	FG-BOV-003DP38-S	282.75
Type 3 -Megasonic	FG-BOV-003MS	309.11
Sleeper Series -Type 3 -Megasonic	FG-BOV-003MS-S	309.11
Type 3 -Plumb Back 25mm	FG-BOV-003PB25	236.61
Sleeper Series -Type 3 -Plumb Back 25mm	FG-BOV-003PB25-S	236.61
Type 3 -Plumb Back 29mm	FG-BOV-003PB29	236.61
Sleeper Series -Type 3 -Plumb Back 29mm	FG-BOV-003PB29-S	236.61
Type 3 -Plumb Back 32mm	FG-BOV-003PB32	236.61
Sleeper Series -Type 3 -Plumb Back 32mm	FG-BOV-003PB32-S	236.61
Type 3 -Plumb Back 34mm	FG-BOV-003PB34	236.61
Sleeper Series -Type 3 -Plumb Back 34mm	FG-BOV-003PB34-S	236.61
Type 3 -Plumb Back 38mm	FG-BOV-003PB38	236.61
Sleeper Series -Type 3 -Plumb Back 38mm	FG-BOV-003PB38-S	236.61
Type 3 -Supersonic	FG-BOV-003SS	262.98
Sleeper Series -Type 3 -Supersonic	FG-BOV-003SS-S	262.98

Accessories BOV Hose Fitting Kit -BLUE	FG-BVS-HKBE	12.52
BOV Hose Fitting Kit -BLACK	FG-BVS-HKBK	12.52
BOV Hose Fitting Kit -RED	FG-BVS-HKRD	12.52
Centrifugal Supercharger Spring -Red. Fits Vee Port and all Type 3 BOV's	FG-BVS-SPCS	14.50
Conversion Kit -convert Type 3 to a Plumb Back 25mm outlet	FG-BVS-CVPB25	36.25
Conversion Kit -convert Type 3 to a Plumb Back 29mm outlet	FG-BVS-CVPB29	36.25
Conversion Kit -convert Type 3 to a Plumb Back 32mm outlet	FG-BVS-CVPB32	36.25
Conversion Kit -convert Type 3 to a Plumb Back 34mm outlet	FG-BVS-CVPB34	36.25
Conversion Kit -convert Type 3 to a Plumb Back 38mm outlet	FG-BVS-CVPB38	36.25
Conversion Kit -convert Type 3 to a Supersonic	FG-BVS-CVSS	54.38
Swivel Nipple -6mm 1/8" BSP Fits Vee Port and all Type 3 BOV's	FG-BVS-SN6	16.44

Replacement Parts Type 3 -Plumb Back & Dual Port Spring -Yellow	FG-BVS-SP03PB	14.50
Vee Port & Supersonic Spring -Brown	FG-BVS-SP0203	14.50
Dual Port blanking plate kit	FG-BVS-DPBP	27.68
O-ring and Grub screws for Type 1, Vee Port and all Type 3 BOV's	FG-BVS-ORGS	9.89

Compact Series

* no adapters required

The range of 25mm Compact BOV's replace the Bosch BOV's used in many factory turbo installations.

Please Note: We have many model specific installation instructions available to help you. Please download them from our website at www.turbosmart.com.au



Compact -Dual Port -25mm inlet/outlet	FG-BOV-KTDP25	210.25
Compact -Plumb Back -25mm inlet/outlet	FG-BOV-KTPB25	170.70
Compact -Supersonic -25mm inlet	FG-BOV-KTSS25	183.89
Compact -Dual Port -20mm inlet/outlet	FG-BOV-KTDP20	210.25
Compact -Plumb Back -20mm inlet/outlet	FG-BOV-KTPB20	170.70
Compact -Supersonic -20mm inlet	FG-BOV-KTSS20	183.89

Replacement Parts Compact DP Spring -Green	FG-BVS-SPKTDP	14.50
Compact PB Spring -Blue	FG-BVS-SPKTPB	14.50
Compact SS Spring & BOV-001 -Pink	FG-BVS-SPKTSS	14.50



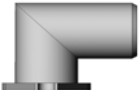
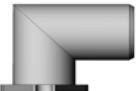
Model Specific Series

* no adapters required






Please Note: We have many model specific installation instructions available to help you. Please download them from our website at www.turbosmart.com.au




Audi 2.7litre V6 TT -Kompact Dual Port set of 2	FG-BOV-KTDPV6	427.75
Mistubishi EVO VI,VII,VIII Dual Port	FG-BOV-EVODP	302.52
Sleeper Series -Mistubishi EVO VI,VII,VIII Dual Port	FG-BOV-EVODP-S	302.52
Sleeper Series -Subaru Liberty GT 03'-04' Plumb Back	FG-BOV-LBGTBP-S	289.34
Subaru Liberty GT 03'-05' Dual Port	FG-BOV-LBGTDP	302.52
Sleeper Series -Subaru Liberty GT 03'-05' Dual Port	FG-BOV-LBGTDP-S	302.52
Sleeper Series -Subaru Liberty GT 03'-04' Supersonic	FG-BOV-LBGTSS-S	289.34
Subaru WRX 01'-05' Vee Port	FG-BOV-WRXVP	216.84
Sleeper Series -Subaru WRX 01'-05' Vee Port	FG-BOV-WRXVP-S	216.84
Subaru WRX 01'-05' Plumb Back	FG-BOV-WRXPB	289.34
Sleeper Series -Subaru WRX 01'-05' Plumb Back	FG-BOV-WRXPB-S	289.34
Subaru WRX 01'-05' Dual Port	FG-BOV-WRXDP	302.52
Sleeper Series -Subaru WRX 01'-05' Dual Port	FG-BOV-WRXDP-S	302.52
Subaru WRX 01'-05' Supersonic	FG-BOV-WRXSS	289.34
Sleeper Series -Subaru WRX 01'-05' Supersonic	FG-BOV-WRXSS-S	289.34

	Description	Part No.	Retail Price € (Euro) - exc VAT	
Universal	(use with Multi-Fit Blow-off Valves)			
 	Hose Adapter -suit 19mm ID hose -supplied with FG-BLANK-19.	FG-ADA-HO19	25.70	
	Hose Adapter -suit 25mm ID hose -supplied with FG-BLANK-25.	FG-ADA-HO25	25.70	
	Hose Adapter -suit 32mm ID hose -supplied with FG-BLANK-32.	FG-ADA-HO32	25.70	
	Hose Adapter -suit 34mm ID hose -supplied with FG-BLANK-34.	FG-ADA-HO34	25.70	
	Hose Adapter -suit 38mm ID hose -supplied with FG-BLANK-38.	FG-ADA-HO38	25.70	
	Hose Tee Adapter -suit 2.0" ID hose	FG-ADA-HT200	38.89	
	Hose Tee Adapter -suit 2.25" ID hose	FG-ADA-HT225	38.89	
	Hose Tee Adapter -suit 2.5" ID hose	FG-ADA-HT250	38.89	
	Hose Tee Adapter -suit 2.75" ID hose	FG-ADA-HT275	38.89	
	Hose Tee Adapter -suit 3.0" ID hose	FG-ADA-HT300	38.89	
	Silicon Hose Tee Adapter -2.0" ID w/ 38mm spout	FG-HT200150-BE	59.29	
	Silicon Hose Tee Adapter -2.25" ID w/ 38mm spout	FG-HT225150-BE	72.47	
	Silicon Hose Tee Adapter -2.5" ID w/ 38mm spout	FG-HT250150-BE	82.35	
	Silicon Hose Tee Adapter -2.75" ID w/ 38mm spout	FG-HT275150-BE	88.94	
	Silicon Hose Tee Adapter -3.0" ID w/ 38mm spout	FG-HT300150-BE	92.24	
	Universal 90 degree elbow adapter - use with weld-on straight adapters	FG-ADA-UELB	36.25	
	Weld-on straight Aluminium adapter	FG-ADA-WA38	9.89	
	Weld-on straight Stainless Steel adapter -as supplied with all Multi-Fit BOV's.	FG-ADA-SS38	9.89	
	Weld-on Stainless Steel 90 degree elbow adapter	FG-ADA-SELB	42.80	
	Greddy Type S & R Adapter -to fit to existing flanges.	FG-ADA-GREDDY	46.14	
	HKS SSQ Adapter -to fit to existing flanges.	FG-ADA-HKS-SSQ	25.70	
	BOV adapter block off cap -suits all Turbosmart BOV adaptors.	FG-ADA-CAP	19.11	
	19mm ID Hose Blanking Plug -as supplied with FG-ADA-HO19.	FG-ADA-BLNK19	9.89	
	25mm ID Hose Blanking Plug -as supplied with FG-ADA-HO25.	FG-ADA-BLNK25	9.89	
	29mm ID Hose Blanking Plug -as supplied with FG-ADA-HO29.	FG-ADA-BLNK29	9.89	
	32mm ID Hose Blanking Plug -as supplied with FG-ADA-HO32.	FG-ADA-BLNK32	9.89	
	34mm ID Hose Blanking Plug -as supplied with FG-ADA-HO34.	FG-ADA-BLNK34	9.89	
	38mm ID Hose Blanking Plug -as supplied with FG-ADA-HO38.	FG-ADA-BLNK38	9.89	
	Model Specific	For use with Multi-Fit range		
	 	Audi A3, VW Golf 03 onwards - pipe kit	FG-ADM-A3	174.00
		Audi S3/TT, Seat Leon Cupra R - Pipe Kit	FG-ADM-1.8T225	174.00
		Audi A4,/A6, Seat Alhambra, VW Passatt/Sharan	FG-ADM-A4	174.00
		Chrysler Neon SRT-4 - USA & CANADA only	FG-ADM-SRT4	65.25
		Daihatsu Charade Gtti	FG-ADM-GTTI	47.13
		Daihatsu Copen	FG-ADM-COPEN	25.71
Fiat Uno		FG-ADM-UNO2	59.45	
Ford Fiesta RS		FG-ADM-FIESTA	47.13	
Ford Escort 1.6RS S1/2		FG-ADM-ESCORT	47.13	
Ford Escort Cosworth - T28 Turbo		FG-ADM-T28COS	59.45	
Ford Escort Cosworth - T34 Turbo & 2/4WD Sierra Cosworth		FG-ADM-T3COS	59.45	
Ford Focus RS		FG-ADM-FOCUS	72.50	
Ford XR6 Turbo -pipe kit		FG-ADM-XR6	131.16	
Vauxhaul Astra/Opel/Holden -pipe kit		FG-ADM-ASTRA	144.34	
Lotus 1.6 Elan SE		FG-ADM-ELAN	47.13	
Mazda 323 4WD 1.6		FG-ADM-323	47.13	
Mitsubishi 3000GT, GTO, Dodge - Stealth		FG-ADM-3000GT	144.35	
Mitsubishi Eclipse Gen 1 -adapter kit (USA & CANADA only)		FG-ADM-ECL1	65.25	
Mitsubishi Eclipse Gen 2 -adapter kit (USA & CANADA only)		FG-ADM-ECL2	45.48	
Nissan 180sx / Silvia - S13, CA18 -pipe kit		FG-ADM-180SXCA	111.39	
Nissan 180sx / Silvia -S13, SR20 -pipe kit		FG-ADM-180SXSR	91.61	
Nissan 200sx / Silvia - S14 & S15 -pipe kit		FG-ADM-200SX	124.57	
Nissan 200sx / Silvia - S14 & S15 -Plumbback connection kit - Connects the outlet of a Plumb Back or Dual Port BOV to the factory return pipe. Fitment of a BOV to this vehicle also requires Part no. FG-ADM-200SX.		FG-ADM-200SXPBK	45.48	
Nissan 300zx, Z32 Twin Turbo		FG-ADM-300ZX	276.82	
Nissan Pulsar GTiR -BOV adapter kit		FG-ADM-GTIR	78.43	
Nissan R32 Skyline GTSt -BOV adapter kit		FG-ADM-R32	65.25	
Nissan R32 Skyline GTSt -Plumbback connection kit - Connects the outlet of a Plumb Back or Dual Port BOV to the factory return pipe. Fitment of a BOV to this vehicle also requires Part no. FG-ADM-R32.		FG-ADM-R32PBK	78.43	
Nissan R33 Skyline GTSt -BOV adapter kit		FG-ADM-R33	58.66	
Nissan R33 Skyline GTSt -Plumbback connection kit - Connects the outlet of a Plumb Back or Dual Port BOV to the factory return pipe. Fitment of a BOV to this vehicle also requires Part no. FG-ADM-R33.		FG-ADM-R33PBK	78.43	
Renault 5		FG-ADM-R5	47.13	
Rover MG Metro		FG-ADM-MG12H	26.10	
Rover MG Montego/Maestro		FG-ADM-MG20H	47.13	
Rover 220/420/620		FG-ADM-MG20T	47.13	
Rover 820		FG-ADM-MG820	47.13	
Seat Ibiza/Leon/Toledo, Skoda Octavia/Superb, VW Beetle/Bora/Golf/Jetta		FG-ADM-1.8T	174.00	
Smart -Fortwo & Roadster -pipe kit suits FG-BOV-001 only.		FG-ADM-SMART	91.61	
Subaru Forester GT 98-00 2.0 litre - adapter kit		FG-ADM-FRST98	65.25	
Subaru Forester GT 01'/02' 2.0 Litre -adapter kit		FG-ADM-FRST20	65.25	
Subaru Forester XT 03'/05' 2.5 Litre -adapter kit		FG-ADM-FRST25	65.25	
Subaru Liberty B4 (BE5) twin turbo 01'-03' -adapter kit		FG-ADM-LBB4	124.57	
Subaru Liberty RS turbo 89-93		FG-ADM-LBRS	58.65	
Subaru WRX 93-97 -adapter kit		FG-ADM-MY97	45.86	
Subaru WRX 98' -adapter kit		FG-ADM-MY98	38.89	
Subaru WRX 99'/00' -adapter kit		FG-ADM-MY99	75.76	
Subaru WRX 01'/04' -adapter kit suits FG-BOV-001 only.		FG-ADM-WRXB1	58.66	
Toyota Celica GT4 - ST165/185		FG-ADM-GT4	47.13	
Toyota MR2 -adapter kit		FG-ADM-MR2	58.66	
Toyota Soarer 2.5TT - 1JZ-GTE- pipe kit		FG-ADM-SOARER	124.57	
Toyota Supra JZA80 - 2JZ-GTE- pipe kit		FG-ADM-SUPRA	124.57	
Toyota Starlet -adapter kit - suits 25mm Kompact BOV's only		FG-ADM-STAR	124.57	
Vauxhall Calibra		FG-ADM-CALIBRA	47.13	
Volvo 700/900/940 Series - Garrett Turbo Only		FG-ADM-VOL	47.13	


Oil Caps

Model Specific	Description	Part No.	Retail Price € (Euro) - exc VAT
	Make Ford/Mazda -Silver -Most late models	FG-OIL-0101	65.88
	Ford/Mazda -Blue -Most late models	FG-OIL-0102	65.88
	Ford/Mazda -Red -Most late models	FG-OIL-0103	65.88
	Make Toyota -Silver -Most late models	FG-OIL-0201	65.88
	Toyota -Blue -Most late models	FG-OIL-0202	65.88
	Toyota -Red -Most late models	FG-OIL-0203	65.88
	Make Nissan/Honda -Silver -Most late models	FG-OIL-0301	65.88
	Nissan/Honda -Blue -Most late models	FG-OIL-0302	65.88
	Nissan/Honda -Red -Most late models	FG-OIL-0303	65.88
	Make Subaru -Silver -Most late models	FG-OIL-0401	65.88
	Subaru -Blue -Most late models	FG-OIL-0402	65.88
	Subaru -Red -Most late models	FG-OIL-0403	65.88
	Make Holden -Silver -Most late models	FG-OIL-0501	65.88
	Holden -Blue -Most late models	FG-OIL-0502	65.88
	Holden -Red -Most late models	FG-OIL-0503	65.88


Electronic Boost Controllers -EBOOST2 -now available in 2 housing diameters

 Please Note: e-Boost2 accessories and replacement parts are for use with e-Boost2 only.
For any previous e-Boost accessories and replacements parts please contact your sales representative


60mm

 Shown with optional single shift light & dash mounting kit


40 PSI Range			
e-Boost2 -40psi max -60mm -Black Face (silver bezel)	FG-EB260-40BK		523.98
Sleeper e-Boost2 -40psi max -60mm -Black Face (black bezel)	FG-EB260-40BK-S		523.98
e-Boost2 -40psi max -60mm -White Face (silver bezel)	FG-EB260-40WT		523.98
60 PSI Range			
e-Boost2 -60psi max -60mm -Black Face (silver bezel)	FG-EB260-60BK		589.99
Accessories			
Dash Mounting Kit -60mm	FG-EBC260-MNT		58.66
Roll Cage Mounting Kit -60mm	FG-EBC60-RCG		65.88
Single Shift/Warning light ring -Silver (Requires 1 LED)	FG-EBC260-SWS		52.07
Single Shift/Warning light ring -Black (Requires 1 LED)	FG-EBC260-SWB		52.07
Dual Shift/Warning light ring -Silver (Requires 2 LED's)	FG-EBC260-DWS		65.25
Dual Shift/Warning light ring -Black (Requires 2 LED's)	FG-EBC260-DWB		65.25
Remote Dual Shift/Warning Light -Silver (Requires 2 LED's)	FG-EBC2-RDWS		65.25
LED -Red -suit shift/warning lights- For use with e-Boost2 only	FG-EBC2-LED1		13.15
LED -Green -suit shift/warning lights- For use with e-Boost2 only	FG-EBC2-LED2		13.15
LED -Blue -suit shift/warning lights- For use with e-Boost2 only	FG-EBC2-LED3		13.15
LED -Orange -suit shift/warning lights- For use with e-Boost2 only	FG-EBC2-LED4		13.15
Microswitch -waterproof including flying leads	FG-EBC2-MS1		32.92
Replacement Parts			
Replacement Loom kit for e-Boost2 -40 -includes wiring loom, all hoses, fittings and clamps.	FG-EBC2-LK40		122.92
Replacement Loom kit for e-Boost2 -60 -includes wiring loom, all hoses, fittings and clamps.	FG-EBC2-LK60		154.89
Replacement Solenoid Kit -40psi -includes solenoid, bracket, fittings and mounting screws .	FG-EBC-SSK40		98.83
Replacement Solenoid Kit -60psi -includes solenoid, bracket, fittings and mounting screws.	FG-EBC-SSK60		98.83
Extension Lead for remote mount shift/warning light	FG-EBC2-EXT		19.74



2 5/8" or 66mm

 Shown with optional single shift light & dash mounting kit

40 PSI Range			
e-Boost2 -40psi max -2-5/8" / 66mm -Silver Face (silver bezel)	FG-EB266-40SL		523.98
e-Boost2 -40psi max -2-5/8" / 66mm -White Face (black bezel)	FG-EB266-40WT		523.98
60 PSI Range			
e-Boost2 -60psi max -2-5/8" / 66mm -Silver Face (silver bezel)	FG-EB266-60SL		589.99
Accessories			
Dash Mounting Kit -2 5/8"	FG-EBC266-MNT		58.66
Roll Cage Mounting Kit -2 5/8"	FG-EBC266-RCG		65.88
Single Shift/Warning light ring -Silver (Requires 1 LED)	FG-EBC266-SWS		52.07
Single Shift/Warning light ring -Black (Requires 1 LED)	FG-EBC266-SWB		52.07
Dual Shift/Warning light ring -Silver (Requires 2 LED's)	FG-EBC266-DWS		65.25
Dual Shift/Warning light ring -Black (Requires 2 LED's)	FG-EBC266-DWB		65.25
Remote Dual Shift/Warning Light -Silver (Requires 2 LED's)	FG-EBC2-RDWS		65.25
LED -Red -suit shift/warning lights- For use with e-Boost2 only	FG-EBC2-LED1		13.15
LED -Green -suit shift/warning lights- For use with e-Boost2 only	FG-EBC2-LED2		13.15
LED -Blue -suit shift/warning lights- For use with e-Boost2 only	FG-EBC2-LED3		13.15
LED -Orange -suit shift/warning lights- For use with e-Boost2 only	FG-EBC2-LED4		13.15
Microswitch -waterproof including flying leads	FG-EBC2-MS1		32.92
Replacement Parts			
Replacement Loom kit for e-Boost2 -40 -includes wiring loom, all hoses, fittings and clamps.	FG-EBC2-LK40		122.92
Replacement Loom for e-Boost2 -60 -includes wiring loom, all hoses, fittings and clamps.	FG-EBC2-LK60		154.89
Replacement Solenoid Kit -40psi -includes solenoid, bracket, fittings and mounting screws.	FG-EBC-SSK40		98.83
Replacement Solenoid Kit -60psi -includes solenoid, bracket, fittings and mounting screws.	FG-EBC-SSK60		98.83
Extension Lead for remote mount shift/warning light	FG-EBC2-EXT		19.74

 Remote dual shift light shown with optional LEDs

Manual Boost Controllers

Description

Part No.

Retail Price € (Euro) - exc VAT



	Boost Tee -includes mounting bracket.	FG-GBCV-BT	71.84
	Sleeper Series -Boost Tee -includes mounting bracket.	FG-GBCV-BT-S	71.84
	In Cabin -includes mounting bracket.	FG-GBCV-IC	137.75
	Sleeper Series -In Cabin -includes mounting bracket.	FG-GBCV-IC-S	137.75
	Single Stage -includes mounting bracket.	FG-GBCV-SS	170.70
	Sleeper Series -Single Stage -includes mounting bracket.	FG-GBCV-SS-S	170.70
	Dual Stage -includes mounting bracket.	FG-GBCV-DS	197.07
	Sleeper Series -Dual Stage -includes mounting bracket.	FG-GBCV-DS-S	197.07
Accessories	Boost Controller Hose fitting kit -BLUE	FG-GBS-FKBE	25.70
	Boost Controller Hose fitting kit -BLACK	FG-GBS-FKBK	25.70
	Boost Controller Hose fitting kit -RED	FG-GBS-FKRD	25.70
	Twin Turbo Hose hook up kit -BLUE	FG-GBS-TTKBE	32.30
	Twin Turbo Hose hook up kit -BLACK	FG-GBS-TTKBK	32.30
	Twin Turbo Hose hook up kit -RED	FG-GBS-TTKRD	32.30
Replacement Parts	Mounting Bracket for Boost Tee & In Cabin	FG-GBS-BKT	9.89
	Mounting Bracket for Single and Dual Stage	FG-GBS-BKT2	9.89
	Replacement Tee Piece for Single Stage, Dual Stage and Incabin Boost Controller	FG-GBS-TP	25.70
	Rocket launcher switch	FG-PA-RLS	16.44

Fuel Cut Defenders



	Pneumatic Fuel Cut Defender -MAP Sensor only.	FG-FCD-001	78.43
	Sleeper Series -Pneumatic Fuel Cut Defender -MAP Sensor only.	FG-FCD-001-S	78.43
	Electronic Fuel Cut Defender	FG-FCD-003	151.56

External Wastegates

Street-Gate 38

	Street-Gate, 38mm External Wastegate	FG-WGATE-38ST	362.50
	Supplied with 7 & 10psi outer springs and gaskets. Machined aluminium finish. NOTE: Flanges and extra springs not included.		

Accessories

	Adapter -Garrett 32 (Australia only) to Ultra-Gate	FG-WG38-AGRT	87.00
	Adapter -KKK (Small) to Ultra-Gate	FG-WG38-AKKK	87.00
	Gasket -Belpa Mica	FG-WG38-GSKT	6.56
	Spring 3 psi outer -Light Blue	FG-WG38-SP03	19.11
	Spring 5 psi outer -Grey	FG-WG38-SP05	19.11
	Spring 7 psi inner -White	FG-WG38-SP07IN	19.11
	Valve Locking Tool -Required to replace Diaphragm.	FG-WG38-VLT	21.75
	Double weld flange kit -10mm Mild Steel -supplied with mounting bolts.	FG-WG38-DWF	32.92
	Double weld flange -10mm Stainless Steel -supplied with mounting bolts.	FG-WG38-DSF	55.99
	Swivel Nipple -6mm 1/8" BSP	FG-BVS-SN6	16.44
	Pressure Line Adapter 1/8" BSP to Dash 4 (Pack of 2)	FG-ADA-DASH4	9.85

Replacement Parts

	Diaphragm, silicone nomex -Requires valve locking tool to fit. Part no. FG-WG38-VLT.	FG-WG38-DIA	43.50
	Spring 7 psi outer -Purple	FG-WG38-SP07	19.11
	Spring 10 psi outer -Blue	FG-WG38-SP10	19.11
	Valve seat	FG-WG38-SEAT	32.92

Ultra-Gate 38

Please Note: all spares and accessories listed are to suit current wastegates only. For details on accessories or upgrading older wastegates please call us for details.

	Ultra-Gate, 38mm External Wastegate -Suited to high temp race applications	FG-WGATE-38	458.07
	Sleeper Series -Ultra-Gate, 38mm External Wastegate	FG-WGATE-38-S	458.07
	Both versions supplied with springs to give 7, 10, 14 or 17psi, Weld flanges, Gaskets, Bolts, Fittings and Hose reducers.		

Accessories

	Garrett 32 (Australia only) to Ultra-Gate adapter	FG-WG38-AGRT	87.00
	KKK (Small) to Ultra-Gate adapter	FG-WG38-AKKK	87.00
	Spring 3 psi outer -Light Blue	FG-WG38-SP03	19.11
	Spring 5 psi outer -Grey	FG-WG38-SP05	19.11
	Valve Locking Tool -Required to replace Diaphragm.	FG-WG38-VLT	21.75
	Swivel Nipple -6mm 1/8" BSP	FG-BVS-SN6	16.44
	Pressure Line Adapter 1/8" BSP to Dash 4 (Pack of 2)	FG-ADA-DASH4	9.85

Replacement Parts

	Diaphragm, silicone nomex -Requires valve locking tool to fit. Part no. FG-WG38-VLT.	FG-WG38-DIA	43.50
	Manifold Gasket -Belpa Mica	FG-WG38-GSKT	6.56
	Double weld flange kit -10mm Mild Steel -supplied with mounting bolts.	FG-WG38-DWF	32.92
	Double weld flange -10mm Stainless Steel -supplied with mounting bolts.	FG-WG38-DSF	55.99
	Spring 7 psi inner -White	FG-WG38-SP07IN	19.11
	Spring 7 psi outer -Purple	FG-WG38-SP07	19.11
	Spring 10 psi outer -Blue	FG-WG38-SP10	19.11
	Ultra-Gate spring upgrade kit -for older Ultragates with press metal spring supports	FG-WG35-UPG	95.57
	Valve seat	FG-WG38-SEAT	32.92

Pro-Gate 48



Please Note: all spares and accessories listed are to suit current wastegates only. For details on accessories or upgrading older wastegates please call us for details.

	Pro-Gate, 48mm External Wastegate -Suited to high temp race applications	FG-WGATE-48	559.57
	Sleeper Series -Pro-Gate, 48mm External Wastegate	FG-WGATE-48-S	559.57
	Both versions supplied with springs to give 7, 10, 14, 17 or 21 psi, Weld flanges, V-Bands, Bolts, Fittings and Hose reducers.		

Accessories

	Garrett 42 (Australia only) to Pro-Gate adapter	FG-WG48-AGRT	72.50
	KKK 42 (Large) to Pro-Gate adapter	FG-WG48-AKKK	87.00
	Racegate 42 to Pro-Gate adapter	FG-WG48-ATRG	87.00
	Exhaust coupling kit -Includes male and female weld flanges and a V-Band clamp.	FG-WG48-ECK	90.30
	Spring 3 psi outer -Brown	FG-WG48-SP03	19.11
	Spring 5 psi outer -Pink	FG-WG48-SP05	19.11
	Valve Locking Tool -Required to replace Diaphragm.	FG-WG48-VLT	21.75
	Swivel Nipple -6mm 1/8" BSP	FG-BVS-SN6	16.44
	Pressure Line Adapter 1/8" BSP to Dash 4 (Pack of 2)	FG-ADA-DASH4	9.85



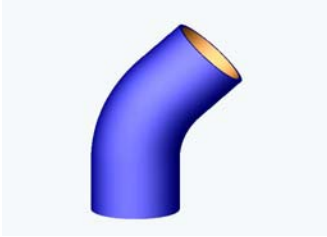
	Description	Part No.	Retail Price € (Euro) - exc VAT	
External Wastegates - cont				
Pro-Gate 48	Please Note: all spares and accessories listed are to suit current wastegates only. For details on accessories or upgrading older wastegates please call us for details.			
	Replacement Parts Diaphragm, silicone nomex -Requires valve locking tool to fit. Part no. FG-WG48-VLT.	FG-WG48-DIA	43.50	
	Weld flange -Male	FG-WG48-WFM	32.30	
	V-Band clamp	FG-WG48-VBC	25.70	
	Spring 7 psi inner -Orange	FG-WG48-SP07IN	19.11	
	Spring 7 psi outer -Green	FG-WG48-SP07	19.11	
	Spring 10 psi outer -Yellow	FG-WG48-SP10	19.11	
	Spring 14 psi outer -Red	FG-WG48-SP14	19.11	
	Progate 45 Spring Upgrade Kit	FG-WG45-UPG	95.57	
Power-Gate 50	Please Note: all spares and accessories listed are to suit current wastegates only. For details on accessories or upgrading older wastegates please call us for details.			
	Power-Gate, 50mm External Wastegate -suited to extreme temp, high boost race applications Supplied with springs to give 14, 21 and 28psi , Weld Flanges, V-Bands, Bolts, Fittings and Hose reducers.	FG-WGATE-50	655.80	
Accessories	Valve Locking Tool -Required to replace Diaphragm.	FG-WG48-VLT	21.75	
	Swivel Nipple -6mm 1/8" BSP	FG-BVS-SN6	16.44	
	Replacement Parts Diaphragm, silicone nomex -Requires valve locking tool to fit. Part no. FG-WG48-VLT.	FG-WG48-DIA	43.50	
	Weld flange -Male	FG-WG50-WFM	32.30	
	V-Band clamp	FG-WG48-VBC	25.70	
	Spring 7psi inner	FG-WG50-SP07IN	19.11	
	Spring 14 psi outer	FG-WG50-SP14	19.11	
	Spring 21psi outer	FG-WG50-SP21	19.11	
	Pressure Line Adapter 1/8" BSP to Dash 4 (Pack of 2)	FG-ADA-DASH4	9.85	
	Fuel Pressure Regulators			
T-Reg Pro	Fuel Pressure Reg -suits -6 #AN Fuel Fittings	FG-FPR-PRO	230.02	
T-Reg Street	Fuel Pressure Reg -suits 1/8" NPT Fuel Fittings	FG-FPR-STR	181.25	
	Accessories Swivel Nipple 3mm (Vac/Boost only)	FG-FRA-014	16.44	
	90 degree Nipple 6mm	FG-FRA-015	13.15	
	6mm barb to -6 #AN ORB	FG-FRA-016	10.51	
	8mm barb to -6 #AN ORB	FG-FRA-017	10.51	
	6mm barb to 1/8" NPT	FG-FRA-019	10.51	
	8mm barb to 1/8" NPT	FG-FRA-020	10.51	
	1/8" NPT to -6 #AN male	FG-FRA-013	10.51	
	-.6 #AN male to -6 #AN ORB	FG-FRA-018	10.51	
	1/8" NPT Blank	FG-FRA-011	8.54	
	-.6 #AN Blank	FG-FRA-012	8.54	
	Fuel Rail Adapters	Fuel Rail Adapter -Subaru/Nissan/Mazda	FG-FRA-001	26.33
	Fuel Rail Adapter -Toyota	FG-FRA-002	26.33	
		Fuel Rail Adapter -Toyota	FG-FRA-003	26.33
		Fuel Rail Adapter -Honda	FG-FRA-004	13.15
		Fuel Rail Adapter -Mitsubishi	FG-FRA-005	26.33
	Hose Connection Kits	Please Note: Kits are supplied with 3 hose fittings and blank in the specified size		
		Street Reg for 6mm hose	FG-FRA-021	26.33
	Street Reg for 8mm hose	FG-FRA-022	26.33	
	Pro Reg for 6mm hose	FG-FRA-023	26.33	
	Pro Reg for 8mm hose	FG-FRA-024	26.33	
	Pro Reg for -6 #AN	FG-FRA-025	26.33	
Other Performance Accessories				
Electrical	Hobbs Pressure Switch 3-7psi	FG-PA-HPS05	38.89	
	Hobbs Pressure Switch 8-13psi	FG-PA-HPS10	38.89	
	Hobbs Pressure Switch 14-24psi	FG-PA-HPS15	52.07	
	Rocket Launcher Switch -as used in Single and Dual Stage Boost Controllers.	FG-PA-RLS	16.44	
Fuel	Fuel Pump Bracket suit 55mm OD VL pump	FG-PA-PB55BE	34.24	
	Fuel Pump Brackets suit 60mm OD Bosch pump	FG-PA-PB60BE	34.24	
Gauges	Boost Gauge 2-1/16", 20PSI -Silver Face (Auto Meter Brand)	FG-PA-GAU4301	98.83	
	Mounting Pod 2-1/16" -Black (Auto Meter Brand)	FG-PA-GAU2204	32.92	
Lubrication	Multispray Lubricant 50ml pump spray -bottled by Uniglide. This product can be used to lubricate Blow-off Valves, Wastegates and many other mechanical products that operate under extreme conditions. This product is a metal conditioner and greatly increases the operating life of sliding components.	FG-PA-MS050	7.88	

Silicone Hose & Clamps

Key: BE = Blue

45 Degree Elbows

Please Note: All Tubosmart Silicon Hose is burst rated between 100psi (4") to 300psi (1")



Imperial Size (inch)	Metric Size (mm)	Part No.	Retail Price € (Euros) - exc VAT
1.00"	25	FG-HE45100-BE	30.32
1.25"	32	FG-HE45125-BE	31.64
1.50"	38	FG-HE45150-BE	32.30
1.75"	45	FG-HE45175-BE	34.93
2.00"	50	FG-HE45200-BE	38.23
2.25"	57	FG-HE45225-BE	40.86
2.50"	63	FG-HE45250-BE	45.48
2.75"	70	FG-HE45275-BE	50.09
3.00"	76	FG-HE45300-BE	58.66
3.50"	89	FG-HE45350-BE	98.20
4.00"	102	FG-HE45400-BE	115.34

90 Degree Elbows



Imperial Size (inch)	Metric Size (mm)	Part No.	Retail Price € (Euros) - exc VAT
1.00"	25	FG-HE90100-BE	31.64
1.25"	32	FG-HE90125-BE	32.95
1.50"	38	FG-HE90150-BE	34.27
1.75"	45	FG-HE90175-BE	36.25
2.00"	50	FG-HE90200-BE	38.89
2.25"	57	FG-HE90225-BE	38.89
2.50"	63	FG-HE90250-BE	45.48
2.75"	70	FG-HE90275-BE	49.43
3.00"	76	FG-HE90300-BE	59.32
3.50"	89	FG-HE90350-BE	95.57
4.00"	102	FG-HE90400-BE	115.34

90 Degree Elbow -Reducer

Imperial Size (inch)	Metric Size (mm)	Part No.	Retail Price € (Euros) - exc VAT
2.50 - 3.00"	76 - 63	FG-HE9R2530-BE	69.20

Hump Hose



Imperial Size (inch)	Metric Size (mm)	Part No.	Retail Price € (Euros) - exc VAT
2.00"	50	FG-HH200-BE	32.30
2.25"	57	FG-HH225-BE	35.59
2.50"	63	FG-HH250-BE	36.91
2.75"	70	FG-HH275-BE	38.89
3.00"	76	FG-HH300-BE	43.50
3.50"	89	FG-HH350-BE	58.66
4.00"	102	FG-HH400-BE	65.25

Hose Joiners - Billet Aluminium

This item comes with a threaded sensor port for measuring temperatures or pressures. The thread size is 1/8" NPT



Imperial Size (inch)	Metric Size (mm)	Part No.	Retail Price € (Euros) - exc VAT
1.00"	25	FG-HJ100	25.70
1.25"	32	FG-HJ125	32.30
1.50"	38	FG-HJ150	38.89
1.75"	44	FG-HJ175	38.89
2.00"	50	FG-HJ200	45.48
2.25"	57	FG-HJ225	45.48
2.50"	63	FG-HJ250	45.48
2.75"	70	FG-HJ275	45.48
3.00"	76	FG-HJ300	52.07

Hose Joiner -Reducers - Billet Aluminium

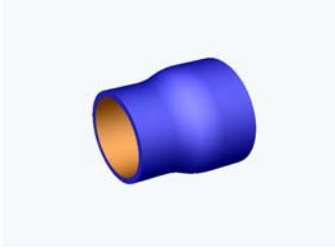
This item comes with a threaded sensor port for measuring temperatures or pressures. The thread size is 1/8" NPT



Imperial Size	Metric Size (mm)	Part No.	Retail Price € (Euros) - exc VAT
1.00-1.25"	25-32	FG-HJR100125	32.30
1.25-1.50"	32-38	FG-HJR125150	38.89
1.50-1.75"	38-45	FG-HJR150175	45.48
1.75-2.00"	38-50	FG-HJR175200	45.48
2.00-2.25"	50-57	FG-HJR200225	45.48
2.00-2.50"	50-63	FG-HJR200250	45.48
2.25-2.50"	57-63	FG-HJR225250	45.48
2.25-2.75"	57-70	FG-HJR225275	45.48
2.50-2.75"	63-70	FG-HJR250275	45.48
2.50-3.00"	63-76	FG-HJR250300	52.07
2.75-3.00"	70-76	FG-HJR275300	52.07

Reducers - Female - Silicon

Please Note: All Turbosmart Silicon Hose is temperature resistant from -50degC to 170degC constant temp.



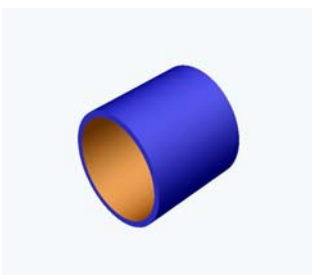
Imperial Size ID (inch)	Metric Size (mm)	Part No.	Retail Price € (Euros) - exc VAT
1.25-1.75"	32-45	FG-HR125175-BE	23.07
1.50-1.75"	38-45	FG-HR150175-BE	23.07
1.50-2.00"	38-50	FG-HR150200-BE	25.70
1.75-2.00"	45-50	FG-HR175200-BE	25.70
1.75-2.25"	45-57	FG-HR175225-BE	27.68
1.75-3.00"	45-76	FG-HR175300-BE	31.64
2.00-2.25"	50-57	FG-HR200225-BE	27.68
2.00-2.50"	50-63	FG-HR200250-BE	29.66
2.00-2.75"	50-70	FG-HR200275-BE	30.32
2.00-3.00"	50-76	FG-HR200300-BE	31.64
2.00-3.25"	50-83	FG-HR200325-BE	32.30
2.25-2.50"	57-63	FG-HR225250-BE	29.66
2.25-2.75"	57-70	FG-HR225275-BE	29.66
2.25-3.00"	57-76	FG-HR225300-BE	31.64
2.50-2.75"	63-70	FG-HR250275-BE	29.66
2.50-3.00"	63-76	FG-HR250300-BE	31.64
2.50-3.25"	63-83	FG-HR250325-BE	32.30
2.75-3.00"	70-76	FG-HR275300-BE	31.64
2.75-3.50"	70-89	FG-HR275350-BE	36.25
3.00-3.50"	76-89	FG-HR300350-BE	36.25
3.00-4.00"	76-102	FG-HR300400-BE	42.18
3.25-4.00"	83-102	FG-HR325400-BE	42.18
3.50-3.75"	89-95	FG-HR350375-BE	38.23
3.50-4.00"	89-102	FG-HR350400-BE	42.18

Hose 'T' Adaptors



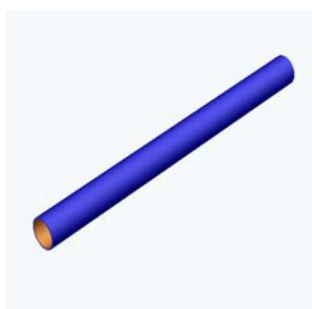
Imperial Size ID (inch)	Spout Size ID (inch)	Part No.	Retail Price € (Euros) - exc VAT
2.00"	1.50"	FG-HT200150-BE	59.29
2.25"	1.50"	FG-HT225150-BE	72.47
2.50"	1.50"	FG-HT250150-BE	82.35
2.75"	1.50"	FG-HT275150-BE	88.94
3.00"	1.50"	FG-HT300150-BE	92.24

Straight Cut Lengths



Imperial Size ID x Length (inch)	Metric Size ID x Length (mm)	Part No.	Retail Price € (Euros) - exc VAT
1.00" x 2 3/8"	25 x 60	FG-HS100060-BE	4.28
1.10" x 2 3/8"	28 x 60	FG-HS110060-BE	4.28
1.25" x 2 3/8"	32 x 60	FG-HS125060-BE	4.28
1.50" x 2 3/8"	38 x 60	FG-HS150060-BE	4.58
1.75" x 2 3/8"	45 x 60	FG-HS175060-BE	4.58
2.00" x 3"	50 x 75	FG-HS200075-BE	5.60
2.25" x 3"	57 x 75	FG-HS225075-BE	6.25
2.50" x 3"	63 x 75	FG-HS250075-BE	7.57
2.75" x 3"	70 x 75	FG-HS275075-BE	9.19
3.00" x 3"	76 x 75	FG-HS300075-BE	10.51
3.25" x 3"	83 x 90	FG-HS325090-BE	14.47
3.50" x 3"	89 x 90	FG-HS350090-BE	16.44
3.75" x 3"	95 x 90	FG-HS375090-BE	17.76
4.00" x 3"	102 x 90	FG-HS400090-BE	19.74

Straight Full Lengths (3 feet)



Imperial Size ID x Length (feet)	Metric Size ID x Length (mm)	Part No.	Retail Price € (Euros) - exc VAT
1.00" x 3'	25 x 915	FG-HS100915-BE	49.43
1.10" x 3'	28 x 915	FG-HS110915-BE	52.07
1.25" x 3'	32 x 915	FG-HS125915-BE	58.00
1.50" x 3'	38 x 915	FG-HS150915-BE	65.91
1.75" x 3'	45 x 915	FG-HS175915-BE	65.91
2.00" x 3'	50 x 915	FG-HS200915-BE	81.07
2.25" x 3'	57 x 915	FG-HS225915-BE	88.98
2.50" x 3'	63 x 915	FG-HS250915-BE	91.61
2.75" x 3'	70 x 915	FG-HS275915-BE	102.16
3.00" x 3'	76 x 915	FG-HS300915-BE	104.80
3.25" x 3'	83 x 915	FG-HS325915-BE	111.39
3.50" x 3'	89 x 915	FG-HS350915-BE	117.98
3.75" x 3'	95 x 915	FG-HS375915-BE	124.57
4.00" x 3'	102 x 915	FG-HS400915-BE	131.16

Aluminium Hose Blank Offs



Imperial Size	Metric Size (mm)	Part No. Pack of 5	Retail Price € (Euros) - exc VAT
0.12"	3	FG-ADA-BLNK03P	13.15
0.16"	4	FG-ADA-BLNK04P	13.15
0.2"	5	FG-ADA-BLNK05P	13.15
0.24"	6	FG-ADA-BLNK06P	13.15
0.25"	6.3	FG-ADA-BLNK63P	13.15
0.31"	8	FG-ADA-BLNK08P	13.15
Individual			
0.75"	19	FG-ADA-BLNK19	9.89
1.00"	25	FG-ADA-BLNK25	9.89
1.14"	29	FG-ADA-BLNK29	9.89
1.26"	32	FG-ADA-BLNK32	9.89
1.34"	34	FG-ADA-BLNK34	9.89
1.50"	38	FG-ADA-BLNK38	9.89

Vacuum Hose (pack size -3 metres) available in Black, Blue & Red



KEY

BE = Blue
BK = Black
RD = Red

Imperial Size ID (inch) x L (feet)	Metric Size ID (mm) x L (m)	Part No. Pack -3 metres / 10 feet	Retail Price € (Euros) - exc VAT
0.12" x 10'	3 x 3	FG-HV0303-BE	15.79
	3 x 15	FG-HV0315-BE	39.51
0.12" x 10'	3 x 3	FG-HV0303-BK	15.79
0.12" x 10'	3 x 3	FG-HV0303-RD	15.79
0.16" x 10'	4 x 3	FG-HV0403-BE	17.10
	4 x 15	FG-HV0415-BE	39.51
0.16" x 10'	4 x 3	FG-HV0403-BK	17.10
0.16" x 10'	4 x 3	FG-HV0403-RD	17.10
0.20" x 10'	5 x 3	FG-HV0503-BE	19.74
0.20" x 10'	5 x 3	FG-HV0503-BK	19.74
0.20" x 10'	5 x 3	FG-HV0503-RD	19.74
	5 x 15	FG-HV0515-BE	46.10
0.24" x 10'	6 x 3	FG-HV0603-BE	26.33
0.24" x 10'	6 x 3	FG-HV0603-BK	26.33
0.24" x 10'	6 x 3	FG-HV0603-RD	26.33

Vacuum Hose -reinforced (pack size -3 metres)



Imperial Size ID (inch) x L (feet)	Metric Size ID (mm) x L (m)	Part No. Pack -3 metres / 10 feet	Retail Price € (Euros) - exc VAT
0.24" x 10'	6 x 3	FG-HH0603-BE	52.69

Hose Clamps

Spring Clamps for Vacuum Tubing



Imperial Size ID (inch)	Metric Size ID (mm)	Part No. Pack of 10	Retail Price € (Euros) - exc VAT
0.12"	3	FG-HCS-003	4.58
0.16"	4	FG-HCS-004	4.58
0.20"	5	FG-HCS-005	4.58
0.24"	6	FG-HCS-006	4.58

Please note: the sizes ranges specified below are outside diameters and you will need to add twice the wall thickness (0.39-0.47" or 10-12mm in total) of the hose inside diameter to select the correct clamp size.

Constant Tension Clamps by Norma -all Stainless Steel

The constant tension clamp by Norma is revolutionary in design. This unique system places constant tension on the hose allowing a far greater seal -not recommended for more than 15psi



Imperial Size Range (inch)	Metric Size Range (mm)	Part No. Pack of 2	Retail Price € (Euros) - exc VAT
1.00"	25-40	FG-HCT-09032	3.29
1.25-1.50"	32-50	FG-HCT-09041	3.29
1.75"	40-60	FG-HCT-09050	3.49
2.00-2.25"	50-70	FG-HCT-12060	5.40
2.50"	60-80	FG-HCT-12070	6.03
2.75-3.00"	70-90	FG-HCT-12080	8.10
3.50-4.00"	90-110	FG-HCT-12100	8.23
		each	
		Flexdriver Tool 7mm hex head	15.79

Heavy Duty Clamps by Norma -all Stainless Steel

The heavy duty Norma clamp featured here has been designed to allow extremely high band tension. Features include reinforced loops, mechanically locked closure and a robust band with rounded edges.



Imperial Size Range (inch)	Metric Size Range (mm)	Part No. Pack of 2	Retail Price € (Euros) - exc VAT
2.00" -2.17"	51-55	FG-HCH-20053	14.47
2.17" -2.32"	55-59	FG-HCH-20057	14.80
2.32" -2.50"	59-63	FG-HCH-20061	15.39
2.50" -2.68"	63-68	FG-HCH-20066	15.52
2.68" -2.87"	68-73	FG-HCH-25071	19.94
2.87" -3.11"	73-79	FG-HCH-25076	20.14
3.11" -3.35"	79-85	FG-HCH-25082	20.40
3.35" -3.58"	85-91	FG-HCH-25088	20.40
3.58" -3.82"	91-97	FG-HCH-25094	20.40
3.82" -4.09"	97-104	FG-HCH-25101	21.72
4.09" -4.41"	104-112	FG-HCH-25108	22.11
4.41" -4.76"	112-121	FG-HCH-25117	22.38

Promotional Products

Description

Part No.

Retail Price € (Euro) - exc VAT



Please Note: Your standard dealer discount may not apply to our promotional clothing range. Please consult your sales rep for further details.

Dealer Catalogue	PR-CAT	1.32
Key Chain BOV -looks like miniature Vee Port.	PR-BOVKEY	16.44
Key Chain BOV -looks like miniature Supersonic.	PR-BOVKEY-SS	19.74
Window Sticker 150mm	PR-STIK-150	0.99
Window Sticker 300mm	PR-STIK-300	9.85
Window Sticker 500mm	PR-STIK-500	13.15
Window Sticker 900mm	PR-STIK-900	26.33
Baseball Cap -Black/Red '3D design'	PR-BCAP-BKRD	9.85
Baseball Cap -Blue	PR-BCAP-BE	9.85
Baseball Cap -Red	PR-BCAP-RD	9.85
Turbosmart Beanie	PR-BEANIE	7.91
Jacket (* Specify size) S,M,L,XL,XXL	PR-JACKET-*	79.06
Polo Shirt (* Specify size) M,L,XL,XXL	PR-POLO-*	32.92
T-Shirt (* Specify size) S,M,L,XL,XXL	PR-TSHIRT-*	17.10

TRADING POLICY

How to Order



Please fax your orders to: +44 (0)1924 890394



or phone us on :- Sales +44 (0)870 770 8683 Accounts : +44 (0)870 770 8679 Admin : +44 (0)870 770 8690



or email us: sales@aet-turbos.co.uk

and check out our website at www.aet-turbos.co.uk

Payment Methods

Credit Cards : Bank Card, MasterCard, Visa, Switch

Direct Deposit: our account is held with Barclays Bank Plc, 1 Wood St, Wakefield, WF1 2EA, UK

Account Name -AET Engineering Ltd, Sort Code:20-89-68, Account No: 80103632

IBAN #: GB29 BARC 2089 6880 1036 32

Delivery Methods

Domestic: Parcelforce 24

International: TNT International, International Datapost. All freight charged at cost.

Return Policy

We believe in offering the Very Best Value, Quality and Selection. If an Turbosmart product you purchase from AET Eng Ltd does not meet your expectations, simply return your unused product for a refund or exchange within 90 days from date of purchase. Please include a copy of the receipt or invoice along with the unused product and original packaging.

Restocking Fees apply to goods that need repackaging and is charged @ 20% of invoice value. Goods cut or ordered to your specifications or under £10 (invoice value) cannot be returned.

Problems with your order

An Item Is Missing You may receive more than one shipment when you place an order with multiple items. The invoice enclosed with your order indicates which items were shipped. If you have additional questions please feel free to contact us.

My Order Didn't Arrive. When your order is shipped you will be advised of its despatch date and its tracking number on the invoice by post. You can use this tracking number to check the status of your order. If you are unable to check the status of your order, please contact us and we can track your order for you.

An Item Is Damaged or Defective Your satisfaction is our number one priority and if an item does not meet your expectations, simply contact us so we can arrange a replacement.

AET ENGINEERING LTD reserves the right to make changes to this price list without notice

AET ENGINEERING LTD have made every effort to avoid printing errors in the Turbosmart Pty Ltd Price Guide.

AET ENGINEERING LTD are not responsible for any pricing, application or specification errors, or for omissions or changes.